



Installing STDM 1.7



Revision: 10-01-2018

Table of Contents

<i>Table of Contents</i>	<i>i</i>
BEFORE INSTALLING	2
WHAT DO I NEED TO INSTALL TO HAVE A FULLY FUNCTIONAL STD M?	2
DO I NEED TO UNINSTALL PREVIOUS INSTALLATION OF THE ABOVE SOFTWARE?	2
USING BUNDLED STD M INSTALLER	2
INSTALLING FROM GLTN PLUGIN REPOSITORY	8
UNINSTALLING QGIS FOR STD M	10
MIGRATION FROM PREVIOUS VERSION	16
AUTOMATIC UPGRADE	17
MANUAL UPGRADE	19
FAILED STD M INSTALLATION	21
FAILURE TO INSTALL ON WINDOWS 7	22
FAILURE TO INSTALL ON WINDOWS SERVER	24

Before Installing

What do I need to install to have a fully functional STDM?



In the provided installation package, there are core components of software packages that are mandatory for an installation of STDM to work properly.

The following need to be installed:

- QGIS (current version 2.18)
- PostgreSQL (current version 9.5)
- PostGIS (current version 2.2)
- Sample data - this is optional if you want to have a sample data to manipulate and test features of STDM.

Do I need to uninstall previous installation of the above software?

This is not necessary if you are working with QGIS 2.14 or higher and PostgreSQL 9.5 or higher. If you have lower versions, we cannot guarantee the full functionality of STDM. However, in such a case, you need to do the following:

1. Start QGIS normally and wait for it to load
2. Download the latest version of STDM plugin from GitHub: <https://github.com/gltm/stdm> by adding STDM download repository in the QGIS Plugin manager. See instructions [here \(Download From repository\)](#)
4. Using PostgreSQL database Administrator i.e **pgAdmin** () , create a new database called **stdm**.
5. Install PostGIS extension created for the PostgreSQL version you are using. You can download it from <http://postgis.net/install/>.
6. On the QGIS window, check if STDM is enabled on the menu and toolbar 

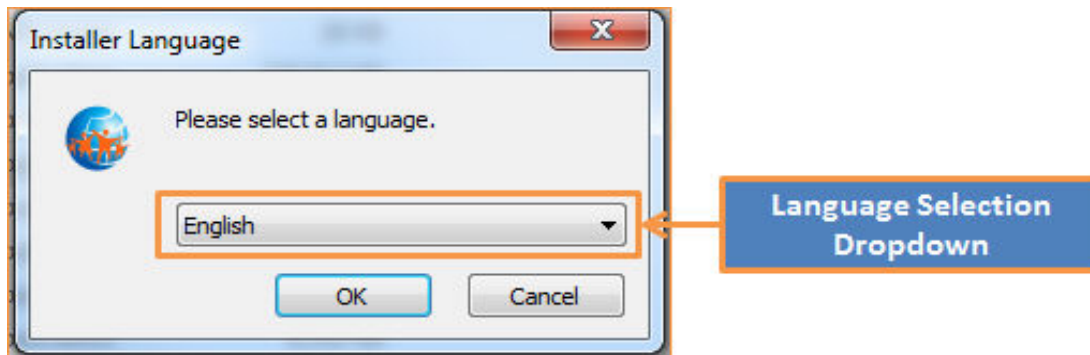
Using Bundled STDM Installer

The bundled installer is the custom installer that is built to help you easily install STDM and dependent software packages.

Note: For **32bit** machine please select and run **STDM-1.7-Final-x32.exe** setup file. For **64bit** machines run **STDM-1.7-Final-x64.exe** setup file.

Installation steps

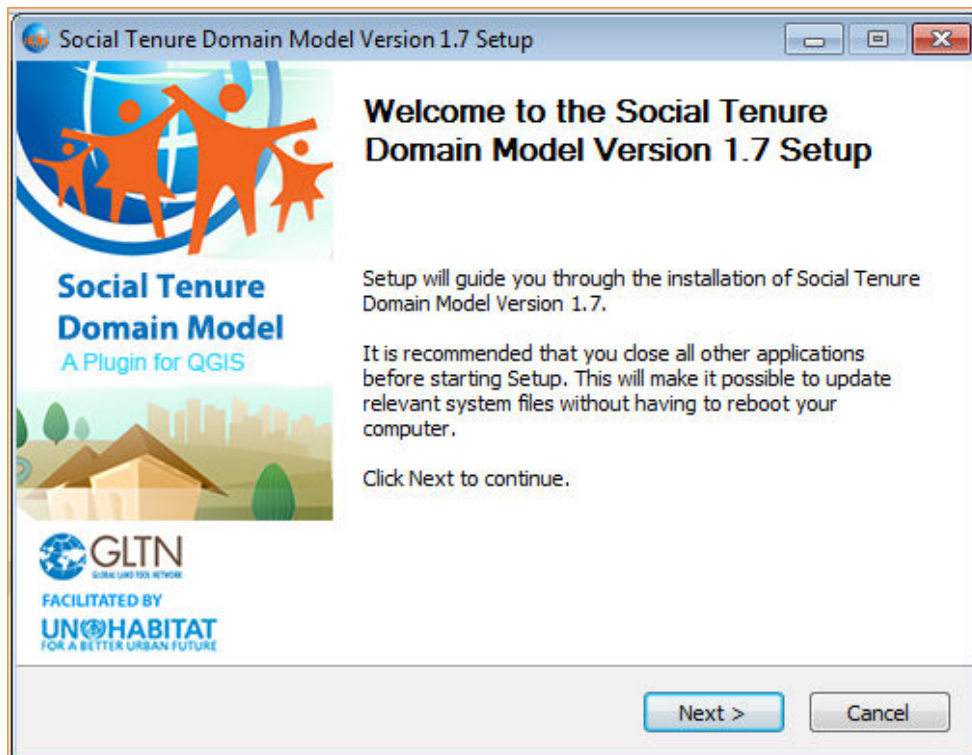
1. Start the installer by double clicking on the setup file.
2. A language selection window similar to the one shown below will appear.



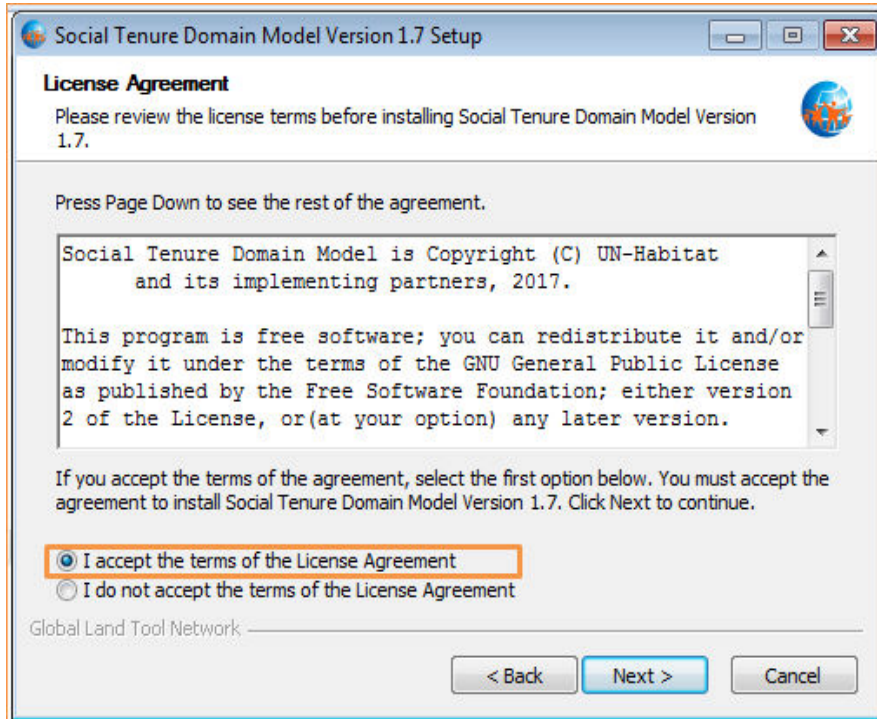
3. Click the dropdown to select a language of your choice then click **OK** button to proceed.

STDM currently supports four languages these are: English, French, Portuguese, and Arabic.

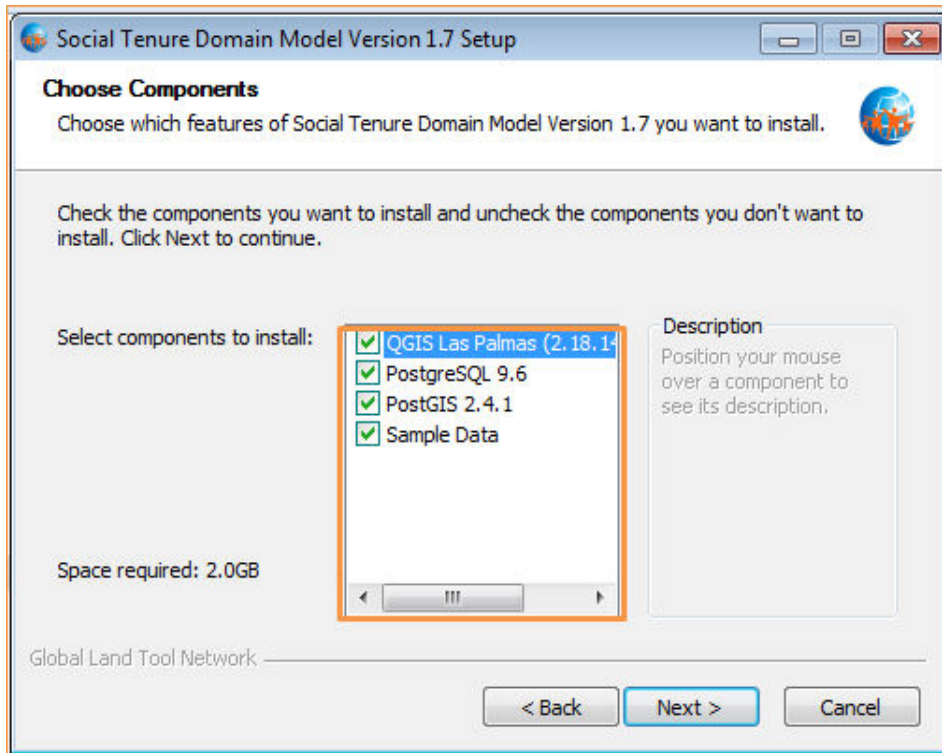
4. A **Welcome** page (shown below) of the installer will appear, read the instructions and click **Next** button to proceed.



5. License Agreement page will appear. Carefully read the license. If you accept the terms and conditions, select '**I accept the terms...**' option (highlighted below) then click **Next** to proceed.



6. Choose Components page will appear. This page allows you to select the products (software) that you wish to install.



Currently the installer allows you to install four products, these are:

- A **QGIS 2.18 for STDM** – This will install QGIS software with STDM plugin embedded
- B **PostgreSQL 9.6** – This will install PostgreSQL database server software. All the data in STDM will be stored here. If you do not have PostgreSQL already installed in your machine make sure you select this option, STDM will not work without this software.
- C **PostGIS** – This installs the GIS plugin for PostgreSQL. Make sure you select this option, STDM will NOT work without this package.
- D **Sample data** – This will install sample files for STDM plugin. This is not a mandatory package, but if you are a new STDM user, it is recommended you install so as to have some practice data.

Note: *If you already have PostgreSQL or PostGIS installed, the installer will skip installation of those components even if you had selected them on the component selection list.*

After you make your selection, click **Next** to proceed.

7. **Database Connection Properties** page. This page will only show if you selected to install **PostgreSQL** database in the previous step.

Social Tenure Domain Model Version 1.7 Setup

Database Connection Properties.
Please specify the database connection properties for installing PostgreSQL and PostGIS.

Database Connection Properties.

User Name:

Password:

Re-enter Password:

Port:

Database Name:

Please take note of these values as they will be required for configuring STDm on using it for the first time.

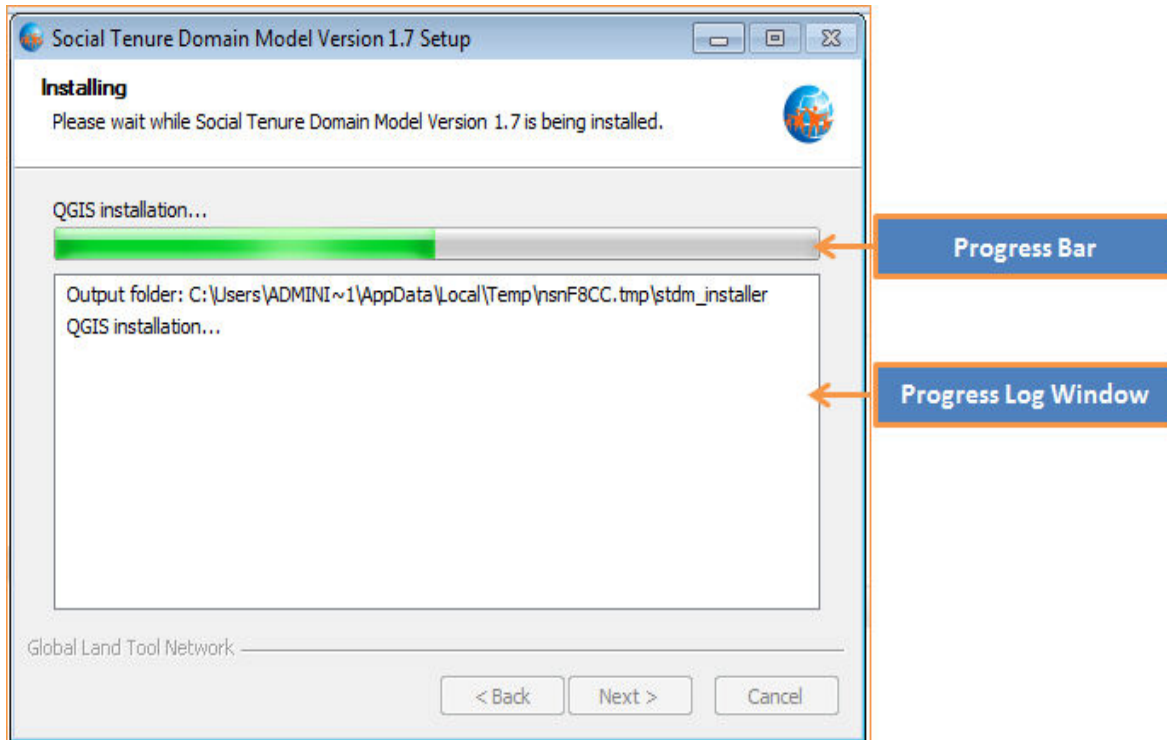
Global Land Tool Network

< Back Install Cancel

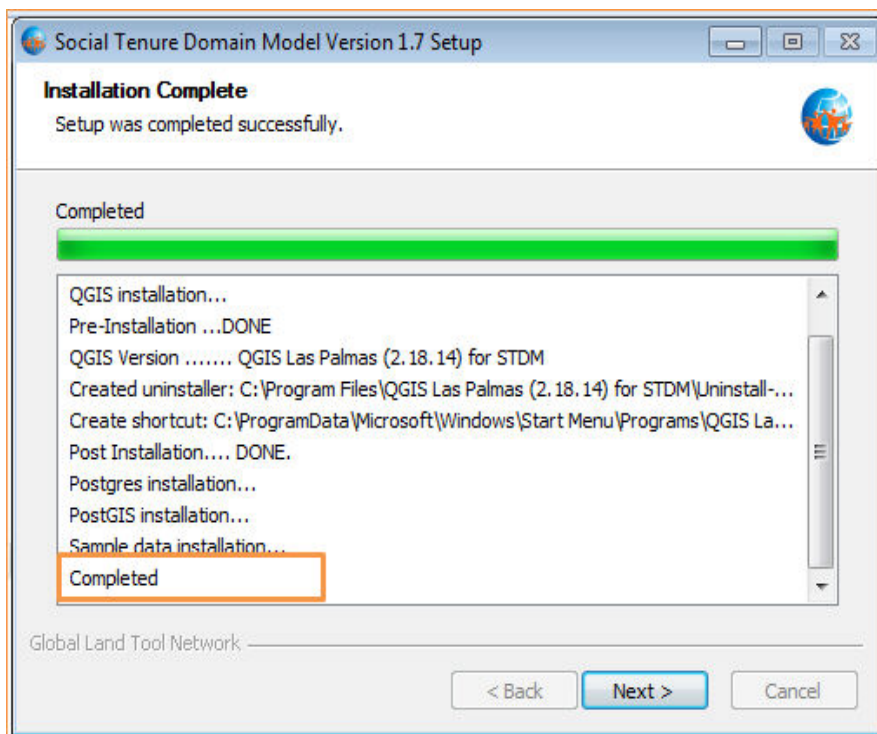
The database connection property page allows you to setup the necessary user credentials that allows you access PostgreSQL database and STDm.

Enter a unique password, but remember it is absolutely important **NOT** to forget this password, you will not be able to access STDm without it. We recommend you leave the rest of the fields with the defaults provided. For more details on PostgreSQL connections setup please see documentation in <https://www.postgresql.org/docs/9.6/static/runtime-config-connection.html>.

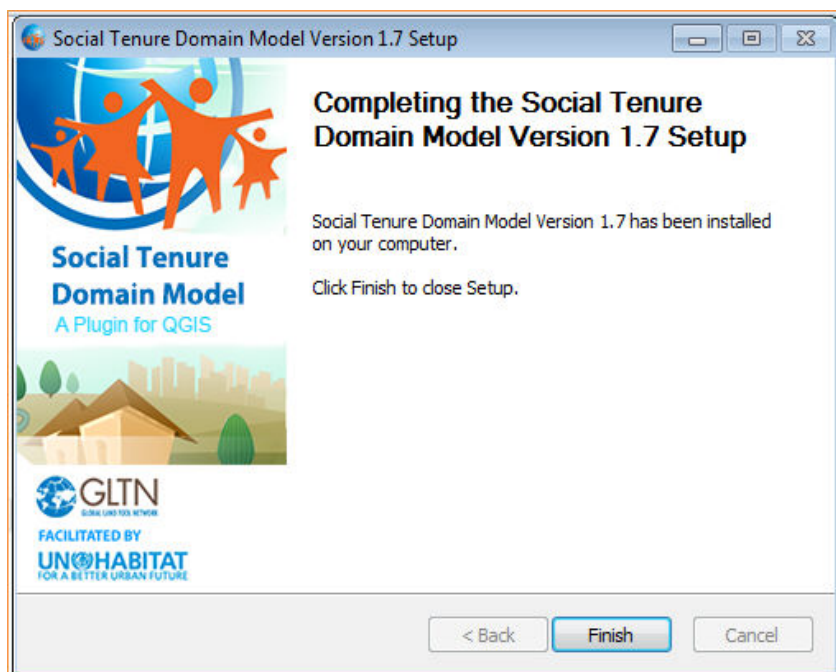
8. Installing page. This page initiates the installation process, installation progress will be indicated by the green progress bar, while the installation progress log will be shown as text on the progress window. Depending on the speed of your machine, this process might take at most 15 minutes.



9. **Installation Complete** page. This will appear once the installation completes successfully, click **Next** to proceed.



10. **Finish** page. Click **Finish** button as shown in the image below to close the installer application window.

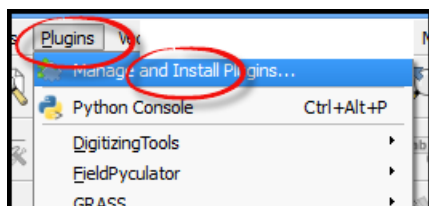


To run **QGIS for STDM**, double click on the icon created on your computer desktop.

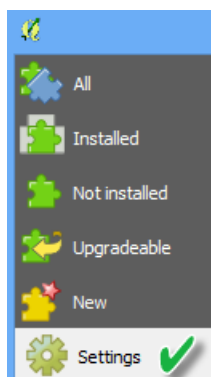
Installing from GLTN Plugin Repository

For users with an already existing installation of QGIS version 2.14 or higher and who do not want to uninstall the current version, we recommend that you download STDM plugin from the repository using the following steps.

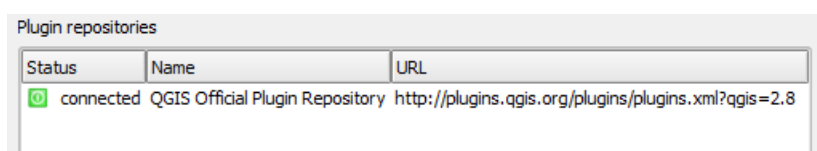
- Start QGIS normally and wait for it to load
- Go to menu **Plugins -> Manage and Install Plugins ...**



- Wait for the plugin to fetch available plugins from the web repository (only if online)
- On the **Plugins** dialog select **Settings** tab



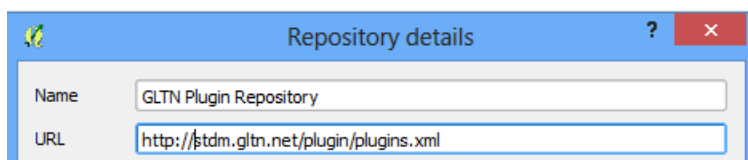
Available repositories will be shown under "**Plugin repositories**"



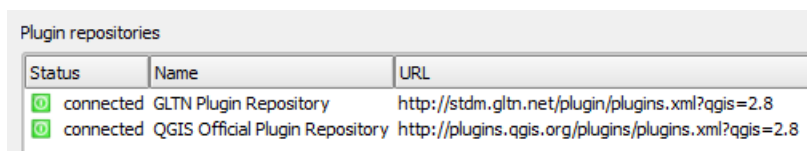
- Click on the Add button (**Add...**) to open repository details dialog. The dialog allows you to enter additional repository properties,

To add STDM plugin repository, please enter the details as follows;

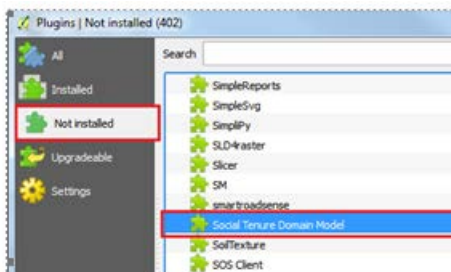
1. In the Name field enter: **GLTN Plugin Repository**
2. In the URL field enter: <http://stdm.gltn.net/plugin/plugins.xml>
3. Ensure the **Enabled** option is checked then select **OK** to close.



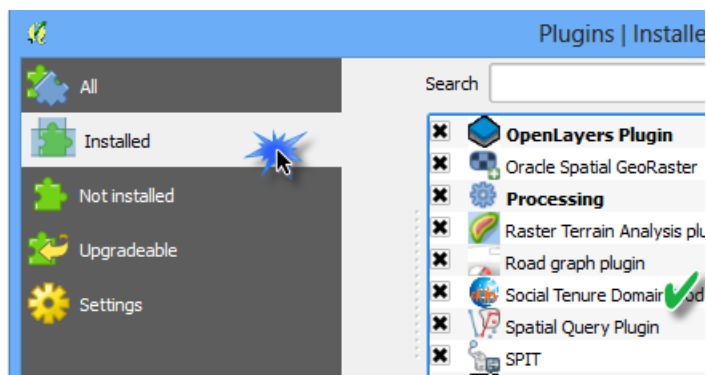
- Click on the OK button to dismiss the dialog.
- The dialog will try accessing the added repository (if online), and pull the linked plugins. If successful, the repository will be added to the list.



- While still on the Plugins window select the **Not installed** tab, look for STDM plugin on the list of `Not installed` plugins. Select it and click Install plugin.



- QGIS will download and install STDM plugin. The plugin should now be available on the **Installed tab** and also on the QGIS main panel.



- Click close to dismiss the dialog.

You are now ready to start using STDM. On the QGIS Toolbar, you will see the image below.

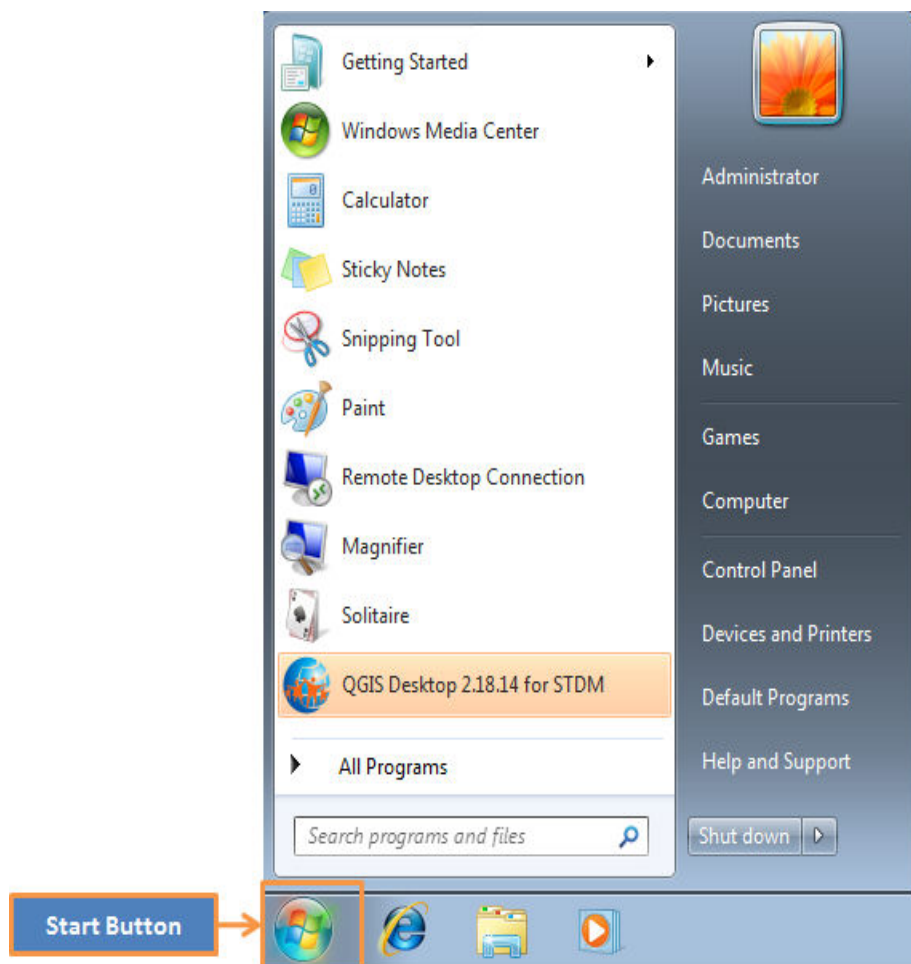


Uninstalling QGIS for STDM

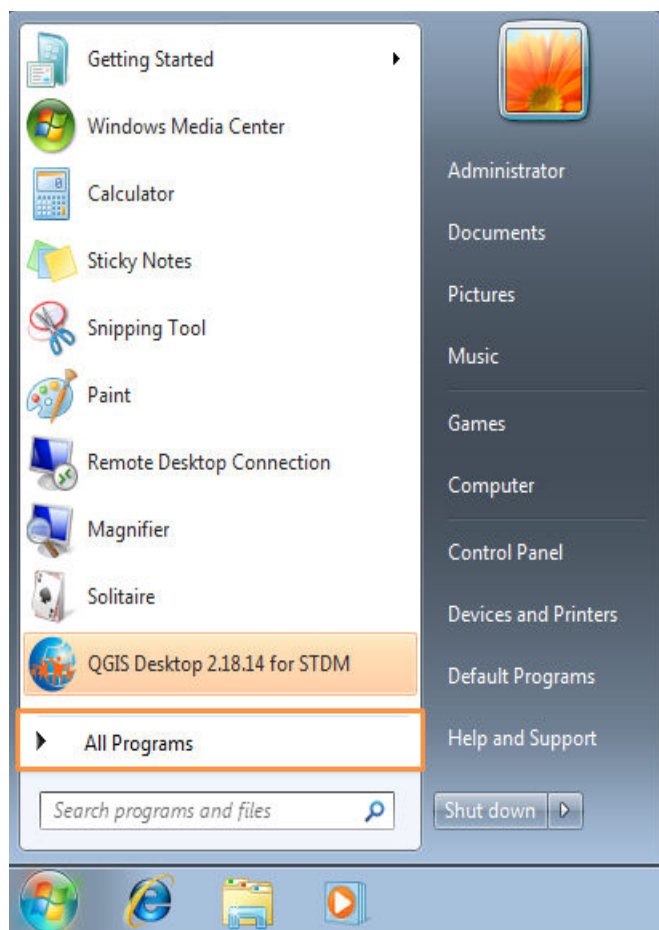
Note: It is strongly recommended to backup your .stdm folder and the database before uninstalling STDM and used packages.

To uninstall QGIS for STDM follow the steps below.

1. On your windows machine, click on **Start** button to access the **All Programs** menu option.

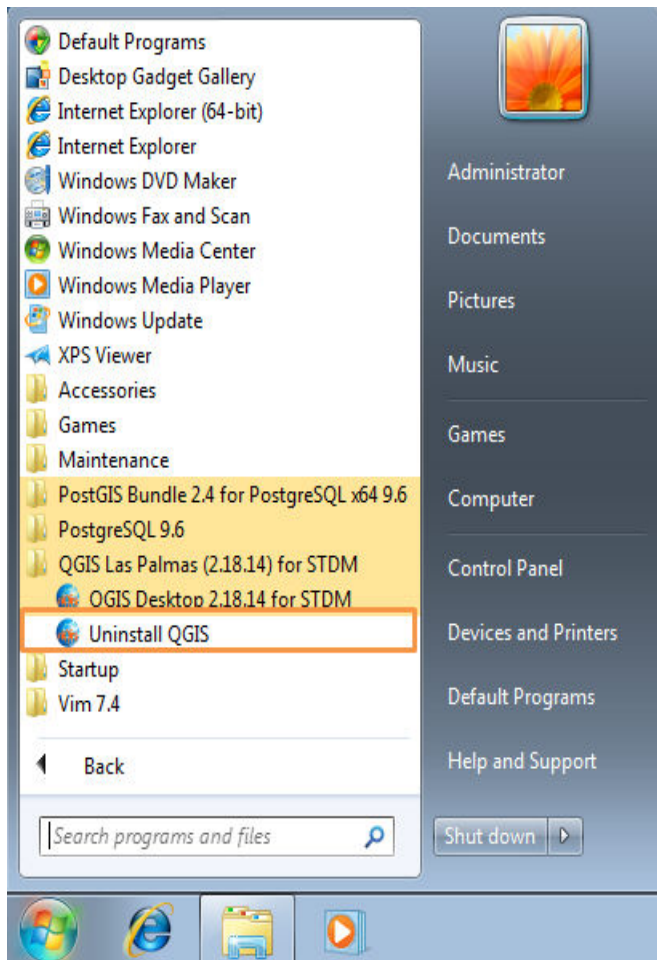


2. Click on **All Programs** menu option to access the folder with QGIS for STDM installation.

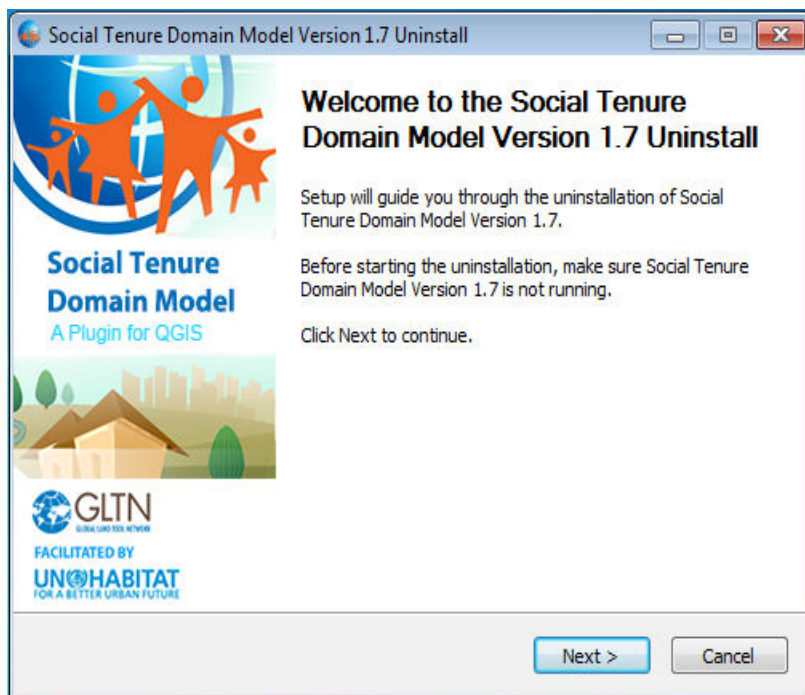


3. Click once on the **QGIS Las Palmas (2.18.14) for STDM** menu option to access the uninstaller application.

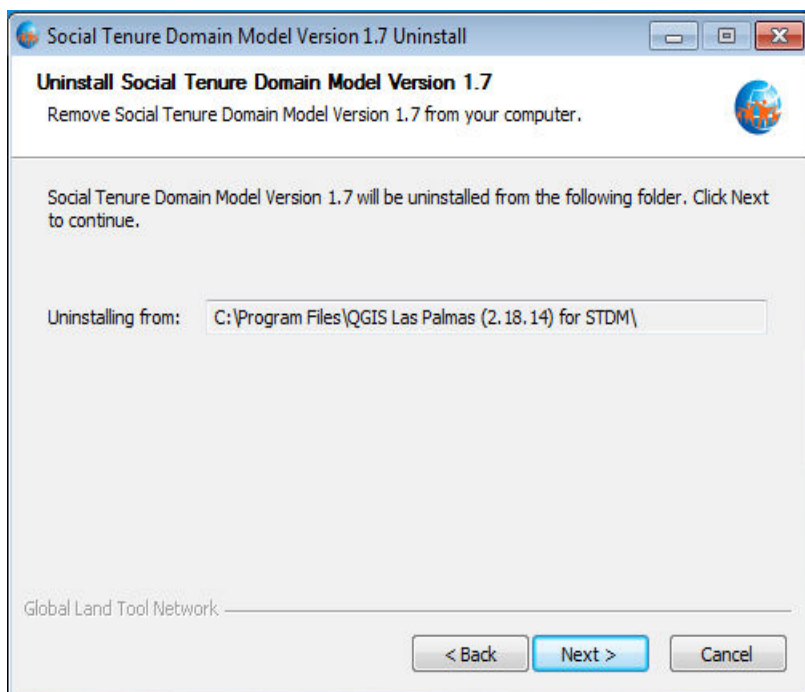
4. Click the **Uninstall QGIS** icon to open the uninstallation program



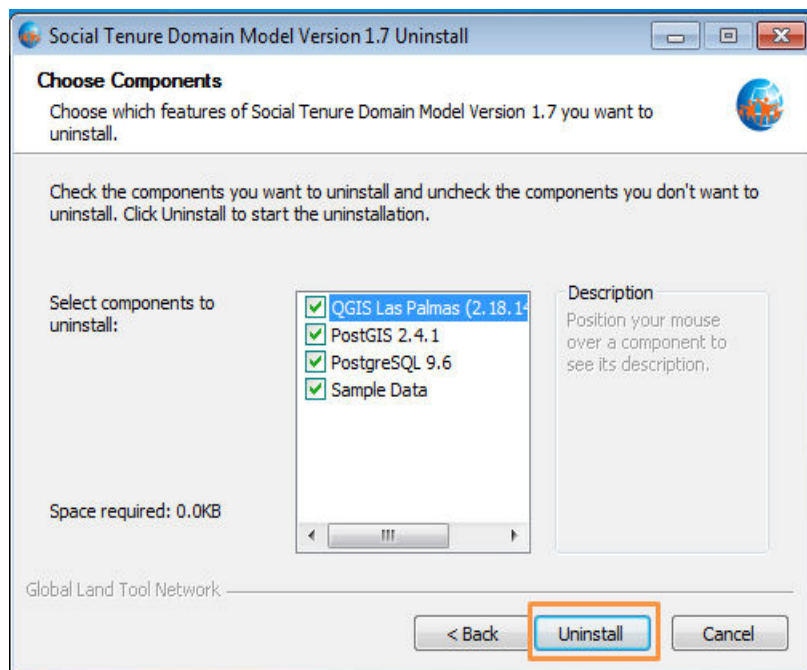
5. On the **Welcome** page click **Next** button to proceed.



6. **Uninstall Folder** page, this shows you where files will be deleted will happen, click **Next** to proceed.

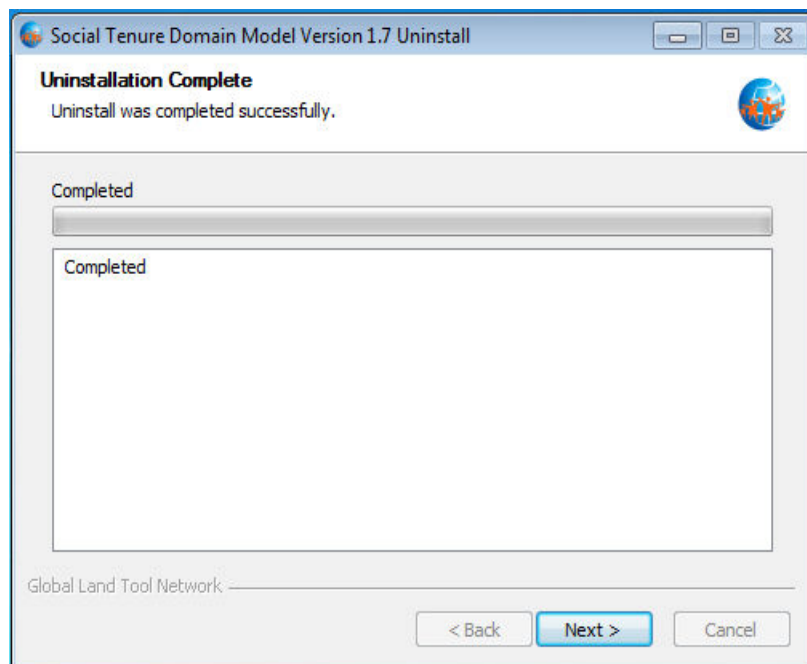


7. **Choose Components** page, this allows you to select which products you need to uninstall. Currently, the uninstaller program allows you to remove four products, these are: **QGIS**, **PostgreSQL**, **PostGIS** and **Sampler data** package.

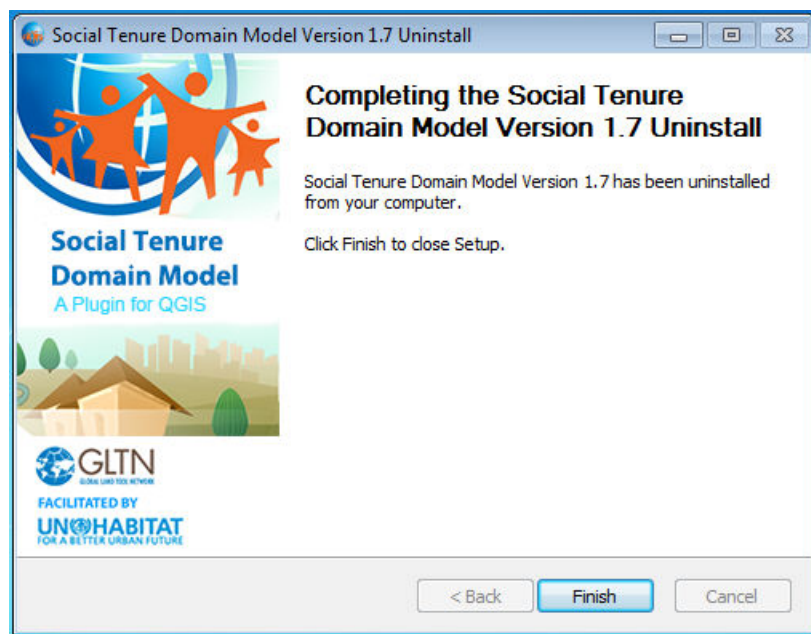


Click **Uninstall** button to start the uninstallation process.

8. **Uninstallation Complete** page, this page will appear after successful uninstallation of all the products you selected. Click **Next** to proceed.



9. **Finish** page, click **Finish** button to close the uninstallation application window.



Migration from Previous Version

Migration from the previous versions of STDM is seamless. The migration will not affect your data. The migration process is handled by the Upgrade Module of STDM. The module executes automatically when you login to STDM 1.7 for the first time after upgrading from STDM version 1.0 and above. You can also run it manually to upgrade upto STDM 1.4 configuration by clicking on the Upgrade button in the options Menu. Then, the configuration will be updated automatically to STDM 1.7 configuration.

When upgrading from STDM 1.0/ 1.1 to STDM 1.7 configuration, the following will take place:

1. A new **configuration.stc** will be created based on **stdmConfig.xml** inside the **.stdm** folder under the user directory.
2. Your existing configuration file, **stdmConfig.xml** will **not** be removed.
3. A new profile will be created based on the old configuration profile name.
4. New tables will be created based on the old table names with a prefix of the first two words of the profile name.
5. The existing tables and data will **not** be deleted.
6. All the new tables will be populated with data that was stored in the old tables to allow you access your data in the new version.
7. Update your templates by replacing the old tables, views, and directories with the new tables, new views, and directories.

- Custom views will be re-created with the same name with 'new_' prefix.
 - Always use views with **new** prefix for custom views.
 - The default **social_tenure_relations** view will be **[entity_table_name]_vw_social_tenure_relationship** view. There will be a separate view for **Parties**, and **Spatial Unit Entities**.
 - The views will not be deleted but you should not use them to create new templates as they will not be updated henceforth. Use the new views.
8. If you upgrade manually while having a newly created configuration through the configuration wizard or the default configuration template, it will be re-named with a format configuration_year_month_date_hour_minute.stc format. E.g. configuration_2016_08_24_02_03.stc. The extension **stc** might not be visible based on your Operating System file extension display setting.

When upgrading from STDM 1.4 to STDM 1.7, the following will take place.

1. New **Social Tenure Relationship Entity** columns will be added, namely *tenure share*, *validity start*, *validity end*.
2. The existing *party_id* column in the **Social Tenure Relationship Entity** will be replaced by the name of the entity followed by '_id'.

When upgrading from STDM 1.5 to STDM 1.7, there will be no change in both the database and configuration.


Automatic Upgrade

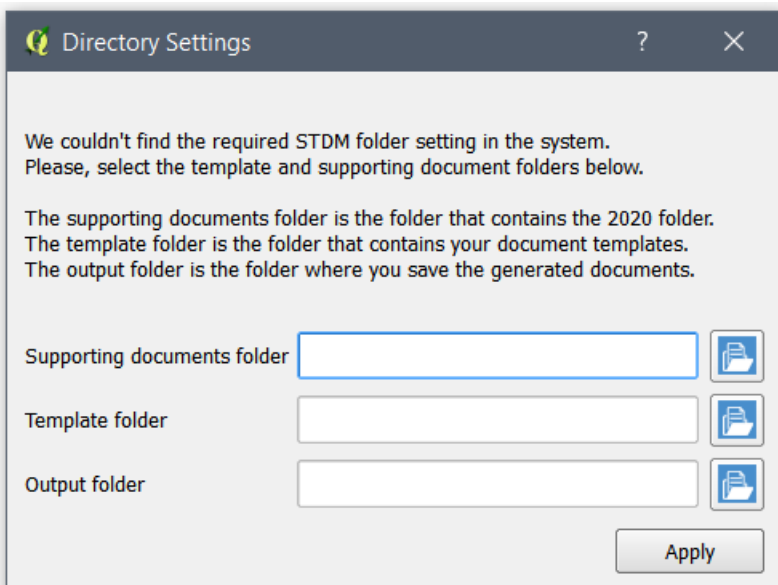
The automatic upgrade happens when you login to STDM for the first time after upgrading to STDM 1.7.

To upgrade automatically, follow the steps below.

1. You will be asked to agree on the terms and conditions of STDM. This might not be shown if you are migrating from STDM 1.4.

In case you have uninstalled QGIS with its registry using third party uninstallers, STDM might lose all the directory settings.

In such a case, you will see the **Directory Settings** dialog requiring you to select the supporting document, template and output folders. At the top, the **Directory Settings** dialog explains for what purpose STDM uses those directories to help you remember the folders. Click on the folder browse button () to select the required folders (see the image below).

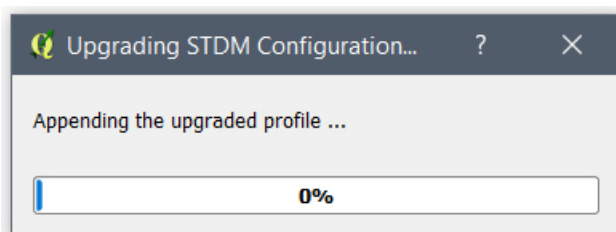


Note: Closing the Directory Settings dialog without selecting and applying the settings will lead to the cancellation of the migration process. This will lead to the temporary loss of access to the existing profile, data, and templates.

If you do not see the dialog, it means, your directory setting is not removed from your system.

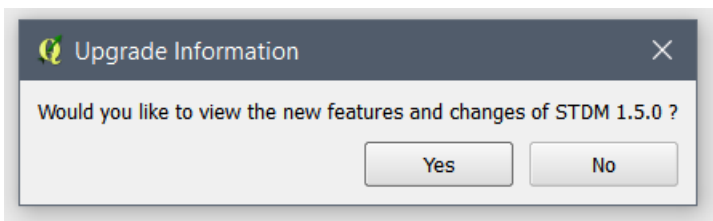
The upgrading of the configuration takes place.

You will see a progress dialog that looks like the following image.

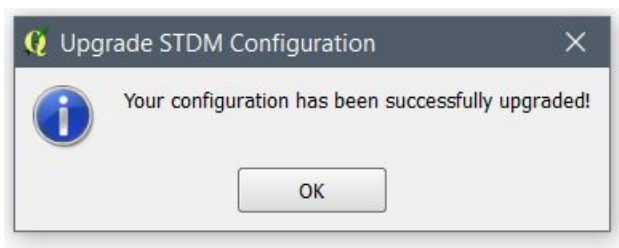


Ensure you do not interrupt the upgrade process as the process involves your data. To reduce the risk of interruption, the progress bar cannot be closed by clicking on the close button; this also prevents QGIS from being closed.

Once the process is complete, you will see a popup requesting you to view changes and new features of STDM (see the image below).



It is recommended to view it. Click the **OK** button to view the changes and new features or click on the **No** button if you do not wish to see the changes.



You will now be able to see your profile with the default profiles of STD M.

You can explore these profiles and on the way learn the capabilities of STD M 1.7 configuration. If you don't need them, you can delete them as discussed in [Deleting Profiles topic](#).

You can also customize the profiles by changing their entities, columns, etc using Copy Profile and Save as Draft features in the Configuration Wizard.

In case of a failed upgrade, you can upgrade using the [Manual Upgrade](#) option.

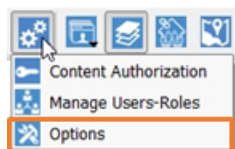
Note: Once you make a successful upgrade, you will no longer be able to revert back to an old configuration. The Upgrade button will be disabled.

Manual Upgrade

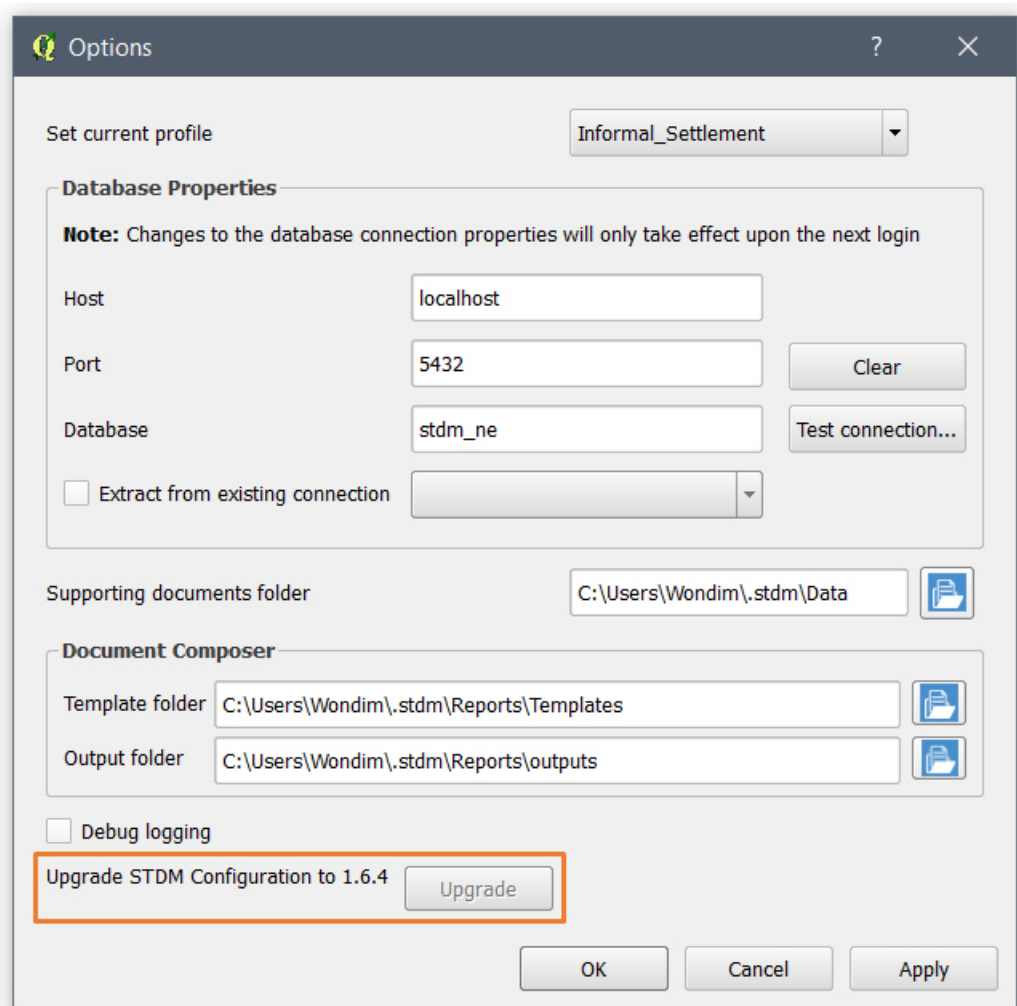
If the automatic upgrade failed, you can still make the upgrade from the Options Module to upgrade from STD M 1.0 or 1.1 to STD M 1.4. After upgrading to STD M 1.4, the configuration will be automatically updated to STD M 1.7.

1. Open the Options module by looking for **Options** under Admin Settings menu located in STD M Toolbar or STD M menu.

Click on **Options** menu as shown in the image below.




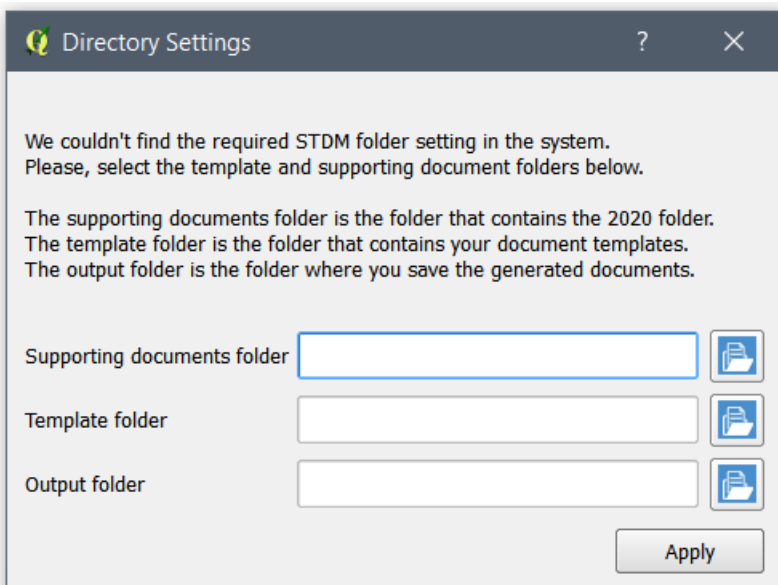
2. Once the **Options** module opens, go to the bottom of the module and locate **Upgrade STDM Configuration to 1.4** with the **Upgrade** button as highlighted below.



3. Click on the **Upgrade** button.

In case you have uninstalled QGIS with its registry using third party uninstallers, you risk losing all the directory settings on STDM.

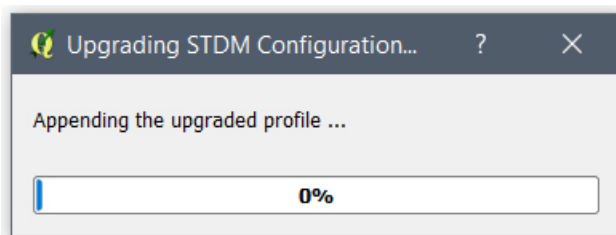
In such a case, you will see a dialog box requiring you to select the supporting document, template and output folders. Click on the folder browse button () to select all the required folders (see the image below).



Note: Closing the Directory Settings dialog without selecting and applying the settings will lead to the cancellation of the migration process. This will lead to the temporary loss of access to the existing profile, data, and templates.

If you do not see the dialog, it means your directory setting is not removed from your system.

This leads to the starting of the upgrade process. You will see a progress dialog as shown below.



Please ensure that you do not interrupt the upgrade process involves your data. To reduce the risk of interruption, the progress bar cannot be closed by clicking on the close button; this also prevents QGIS from being closed.

Once the process is complete, the progress bar disappears and you can start to use STDM.

Note: Once you make a successful upgrade, you will no longer be able to upgrade an old configuration.

Failed STDM Installation

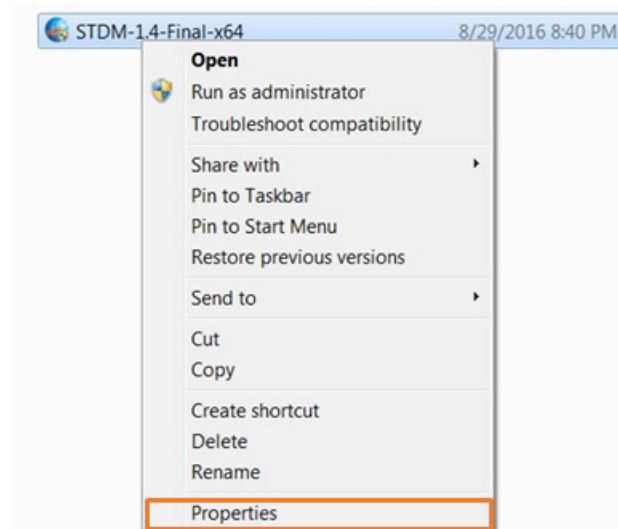
STDM Installation could fail due to various reasons such as infected Computer, incomplete uninstallation of the old version, etc. For solutions, check the following sub-topics.

Failure to Install on Windows 7

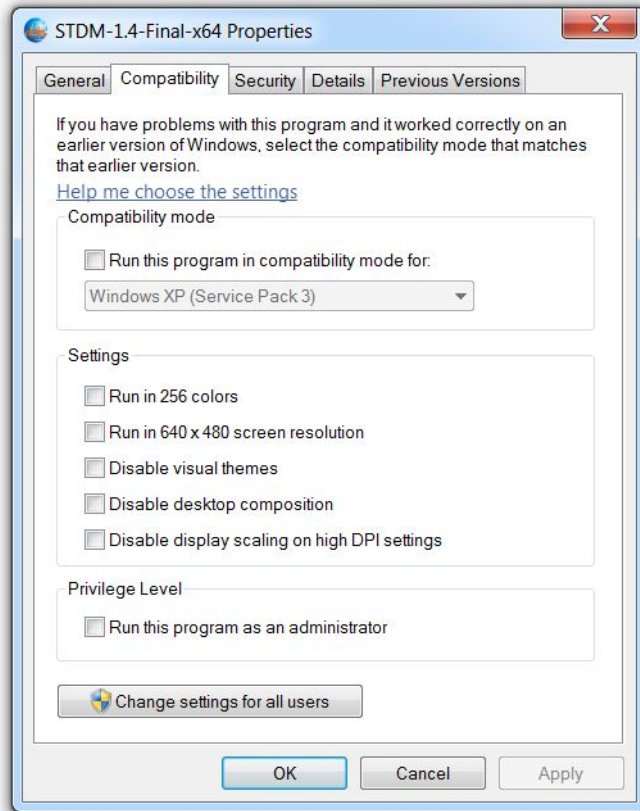
This happens when you try to install STDM Bundled Installer on Windows 7 without Service Pack 1. The installer suggests to upgrade to Service Pack 1.

To install STDM in compatibility mode, follow the steps below.

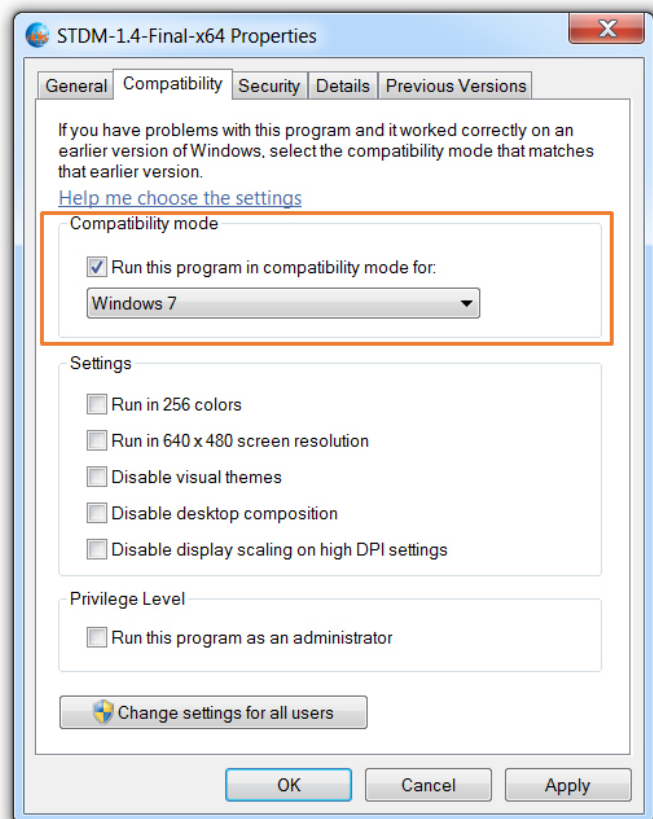
1. **Right-click** on the installer and click on **Properties** item in the **Context** menu (see the image below).



2. Click on **Compatibility** tab as shown in the image below.



3. Inside the **Compatibility mode** box, check on the checkbox, **Run this program in compatibility mod for:** and select **Windows 7** as shown below.



4. Locate the buttons at the bottom. Click on the **Apply** button and then click on the **OK** button.
5. Double click on the STDM bundled Installer to start the installation. It should now start installing normally as discussed in the topic, [Using Bundled STDM Installer](#).

Failure to Install on Windows Server

The failure could happen because of Windows Server password complexity requirement specified [here](#).

Thus, to solve this issue from happening, when setting **postgres** user password, follow the requirements below, which is specified by Microsoft.

1. Passwords must not contain the user's entire **samAccountName** (Account Name) value or entire **displayName** (Full Name) value. Both checks are not case sensitive:
 - The **samAccountName** is checked in its entirety only to determine whether it is part of the password. If the **samAccountName** is less than three characters long, this check is skipped.
 - The **displayName** is parsed for delimiters: commas, periods, dashes or hyphens, underscores, spaces, pound signs, and tabs. If any of these delimiters are found, the **displayName** is split and all parsed sections (tokens) are confirmed not to be included in the password. Tokens that are less than three characters in length are ignored, and substrings of the tokens are not checked. For example, the name "Erin M. Hagens" is split

into three tokens: "Erin," "M," and "Hagens." Because the second token is only one character long, it is ignored. Therefore, this user could not have a password that included either "erin" or "hagens" as a substring anywhere in the password.

2. Passwords must contain characters from three of the following five categories:

- Uppercase characters of European languages (A through Z, with diacritic marks, Greek and Cyrillic characters)
- Lowercase characters of European languages (a through z, sharp-s, with diacritic marks, Greek and Cyrillic characters)
- Base 10 digits (0 through 9)
- Non-alpha-numeric characters: ~!@#\$%^&*_-+=`|\(){}[];":'<>.,?/
- Any Unicode character that is categorized as an alphabetic character but is not uppercase or lowercase. This includes Unicode characters from Asian languages.