

Installing STDM 1.8



Revision: 12-05-2023

Table of Contents

<i>Table of Contents.....</i>	<i>i</i>
BEFORE INSTALLING.....	2
WHAT DO I NEED TO INSTALL TO HAVE A FULLY FUNCTIONAL STDm?	2
DO I NEED TO UNINSTALL PREVIOUS INSTALLATION OF THE ABOVE SOFTWARE?	2
USING BUNDLED STDm INSTALLER.....	2
INSTALLING FROM GLTN PLUGIN REPOSITORY	6
FAILED STDm INSTALLATION	8
FAILURE TO INSTALL AFTER UNINSTALLING PREVIOUS VERSIONS	8

Before Installing

What do I need to install to have a fully functional STDM?

In the provided installation package, there are core components of software packages that are mandatory for an installation of STDM to work properly.

The following need to be installed:

- STDM plugin (current version 1.8.1)
- QGIS (current version 3.28.5)
- PostgreSQL (current version 15.1)
- PostGIS (current version 3.2.2)
- Sample data - this is optional if you want to have a sample data to manipulate and test features of STDM.

Do I need to uninstall previous installation of the above software?

This is not necessary if you are working with QGIS 3.0 or higher and PostgreSQL 14 or higher. Current version of STDM will NOT work with QGIS lower than 3.0

Using Bundled STDM Installer

The bundled installer is the custom installer that is built to help you easily install STDM and dependent software packages.

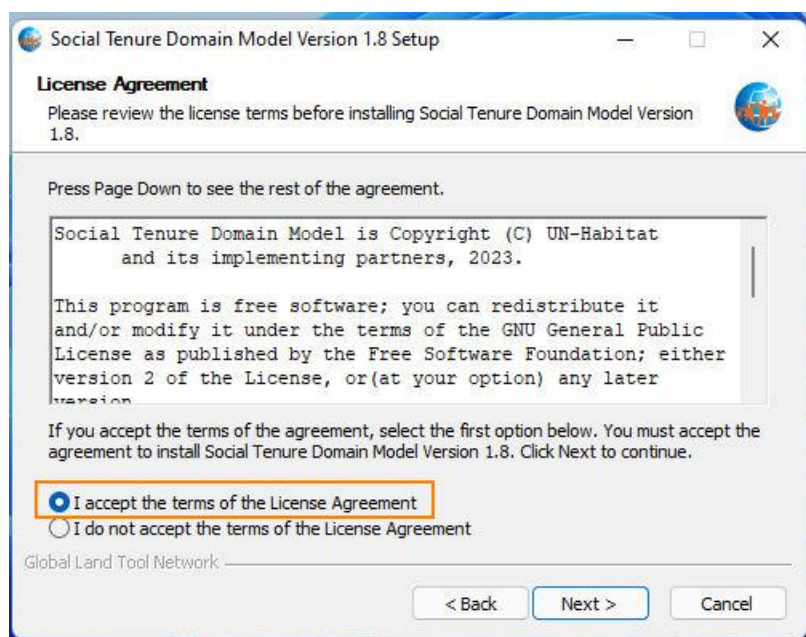
Note: To install, run **STDM-1.8.1 Final-x86_64.exe** setup file.

Installation steps

1. Run the installer by double clicking on the setup file as shown below and select **Next**.



2. Read the license agreement. Once you accept the terms and conditions, select '**I accept the terms...**' option and click **Next** to proceed.

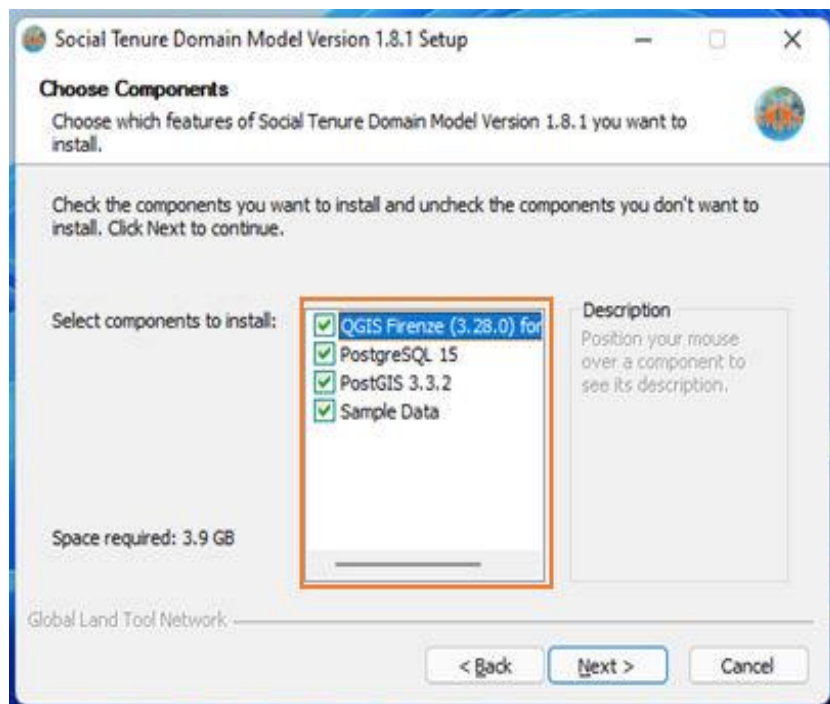


3. Choose the components you would like to install. The following are the available components.
 - a. **QGIS Firenze for STDM** – This will install QGIS with STDM plugin embedded.
 - b. **PostgreSQL 15** – This will install PostgreSQL database server. If you do not have PostgreSQL, make sure you select this option. STDM will not work without it.

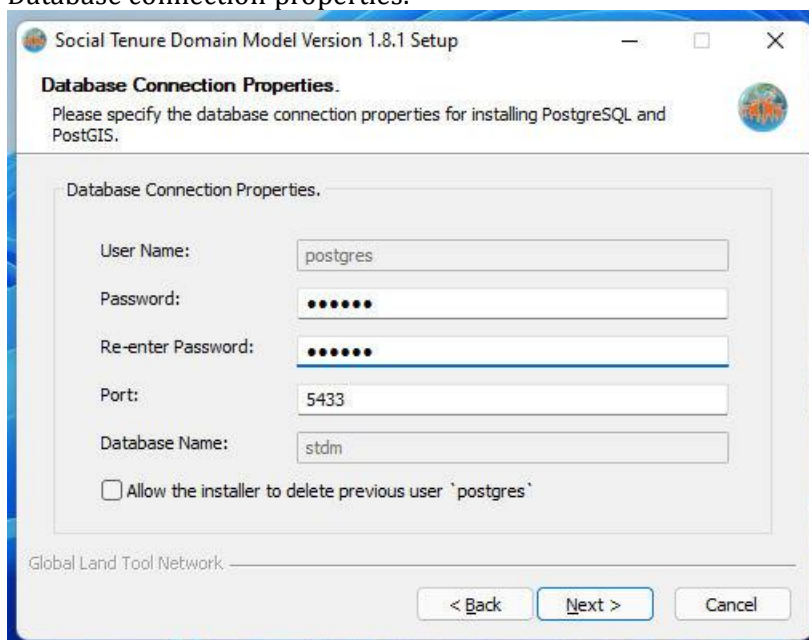
- c. **PostGIS 3.2.2** – This installs the GIS plugin for PostgreSQL. Please ensure you select it if you have not installed it on your machine previously.
- d. **Sample data** – This will install sample files for STDM plugin. This is not a mandatory option but new users are recommended to install to help them jump start with STDM practice.

Note: If you already have the same version of PostgreSQL or PostGIS installed, the installer will skip installation of those components.

After your selection, click **Next** to start the installation as shown in the image below.

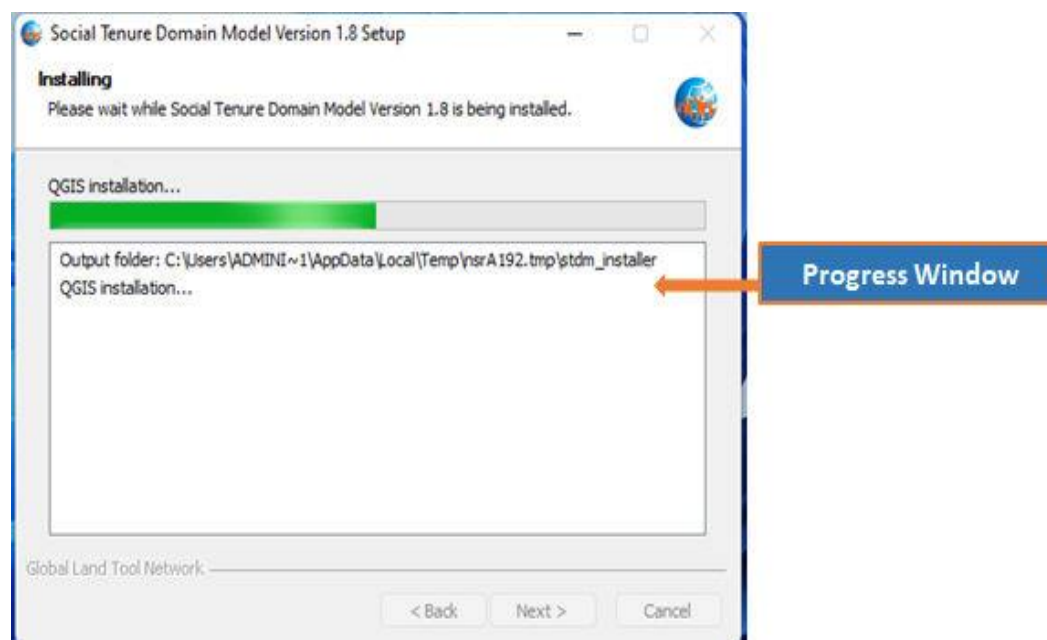


4. Database connection properties.

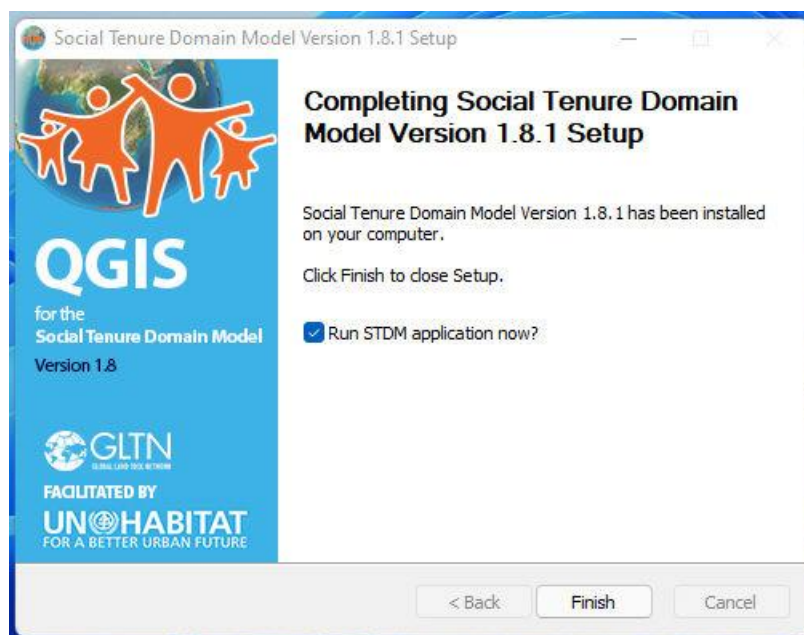


The database connection property window allows you to set the username and password to use with STDM as shown in the image above. Leave the default port to 5433. This is where PostgreSQL server will be listening for database connections. For more details on PostgreSQL connections setup please see documentation <https://www.postgresql.org/docs/15/runtime-config-connection.html>

5. This is the actual component installation as shown in the image below. **QGIS, STDM, PostgreSQL, PostGIS** and all other dependencies will be installed in their respective folders. Depending on the speed of your machine, this process might take at most 15 minutes.



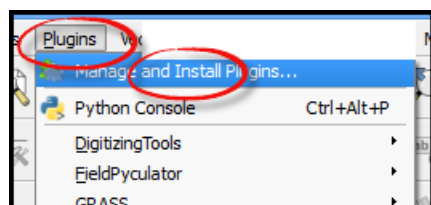
- After successful installation, please close the installer by clicking on the **Finish** button as shown in the image below. Run QGIS for STDM from the icon created on your computer desktop.



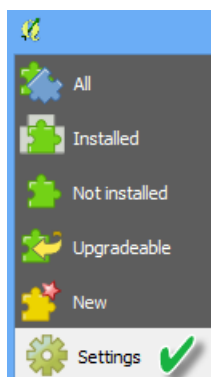
Installing from GLTN Plugin Repository

For users with an already existing installation of QGIS version 3.0 or higher and who do not want to uninstall the current version, we recommend that you download STDM plugin from the repository using the following steps.

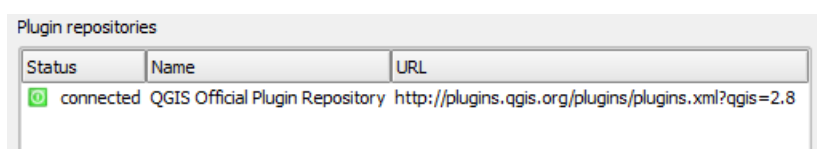
- Start QGIS normally and wait for it to load
- Go to menu **Plugins -> Manage and Install Plugins ...**

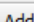


- Wait for the plugin to fetch available plugins from the web repository (only if online)
- On the **Plugins** dialog select **Settings** tab



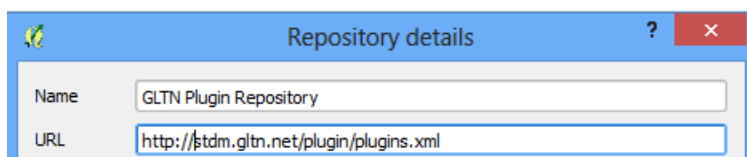
Available repositories will be shown under "**Plugin repositories**"



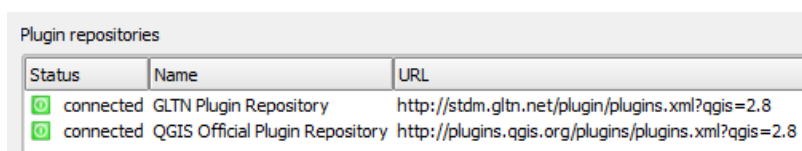
5. Click on the Add button () to open repository details dialog. The dialog allows you to enter additional repository properties,

To add STDM plugin repository, please enter the details as follows;

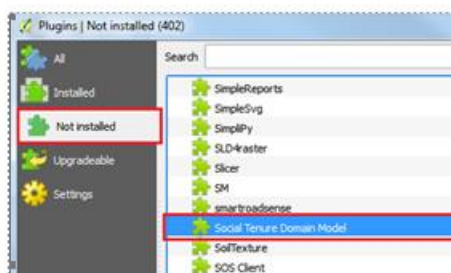
- a. In the Name field enter: **GLTN Plugin Repository**
- b. In the URL field enter: <http://stdm.gltn.net/plugin/plugins.xml>
- c. Ensure the **Enabled** option is checked then select **OK** to close.



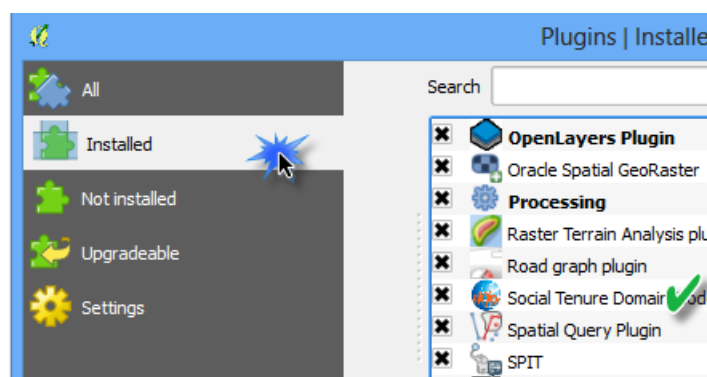
6. Click on the OK button to dismiss the dialog.
7. The dialog will try accessing the added repository (if online), and pull the linked plugins. If successful, the repository will be added to the list.



8. While still on the Plugins window select the **Not installed** tab, look for STDM plugin on the list of 'Not installed' plugins. Select it and click Install plugin.



9. QGIS will download and install STDM plugin. The plugin should now be available on the **Installed tab** and also on the QGIS main panel.



10. Click close to dismiss the dialog.

You are now ready to start using STDM. On the QGIS Toolbar, you will see the image below.



Failed STDM Installation

STDM Installation could fail due to various reasons such as infected Computer, incomplete uninstallation of the old version, etc. For solutions, check the following sub-topics.

Failure to Install after Uninstalling Previous Versions

The failure could happen when the previous version is not properly removed. Follow the steps below to remove the previous version.

1. Backup the STDM database located in **PostgreSQL server**. If you fail to back up your database, **do not** uninstall the PostgreSQL.
2. Go to Start Menu or Start Screen and type **programs and features**. Launch **Programs and Features** tool and uninstall the following;

- PostgreSQL 15 or older versions - if you have backed up your database or do not need your existing database.
 - QGIS Firenze (3.28.5) for STDM or older versions
 - PostGIS 3.2.2 or older versions - if you have backed up your database or if you do not need your existing database.
3. After the above software packages are uninstalled, go to **C:/Program Files** and delete the following directories in case they still exist.
 - QGIS Firenze (3.28.5) for STDM 1.8.1
 - PostgreSQL - if you have backed up your database or do not need your existing database and uninstalled PostgreSQL
 4. If you have backed up your database or do not need your existing database and uninstalled PostgreSQL, remove the **postgres** user.

To remove the **postgres** user, go to **Start Menu** or **Start Screen** and type **cmd**, on **Command Prompt**. Right click on it and **Run as Administrator**.

On the command prompt window type the command below and press the **Enter** key on your keyboard

net user postgres /delete

5. Double click on the STDM bundled Installer to start the installation. It should now start installing normally as discussed in the topic, [Using Bundled STDM Installer](#).